



**J C Road Campus**  
#34, 1st Cross, J C Road, Bangalore - 560 027

## **Payment of fees for II Pre University admission for the academic year 2018-19**

- Students promoted to II Pre University are directed to pay the fees **online using State Bank India Collect (SBI Collect)** (Refer para information on SBI Collect)
- Ensure that fee is duly paid and a copy of the receipt is produced at the college office to collect the I PUC marks card.
- Any delay in payment of fees will incur penalty and is irrevocable.
- Installments and part payments are **not** allowed.
- Demand Draft / Cheque / Cash are **not** allowed at the college office.

### **Fees of II PUC Science / Commerce: INR 68500 per annum**

Rs.37675/- should be remitted to “**Jain College – JC Road**” as Tuition Fees – II PUC Batch 2018

Rs.30825/- should be remitted to “**SBMJECT - JC**” as A&M Fees - II PUC Batch 2018

## **Information on SBI Collect**

### **Using SBI Collect, fee can be paid through Debit / Credit cards or Net banking.**

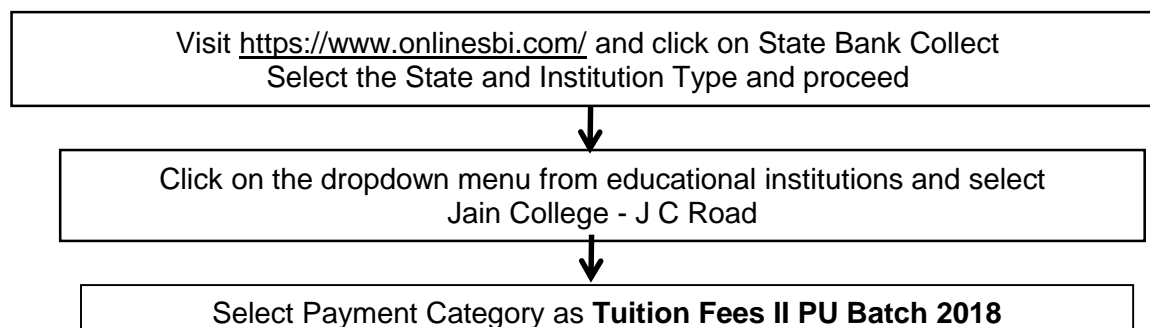
The fee payment using SBI Collect will be subject to convenience charge as mentioned in SBI portal. After successful payment of fee, parent / guardian will get an online receipt for the same. Parents / guardians are advised to take print of the online receipt and keep it safely for any future reference. Please note that all the online payments will be subject to realization and actual credit of so fee paid to student's account may take 2 to 3 days.

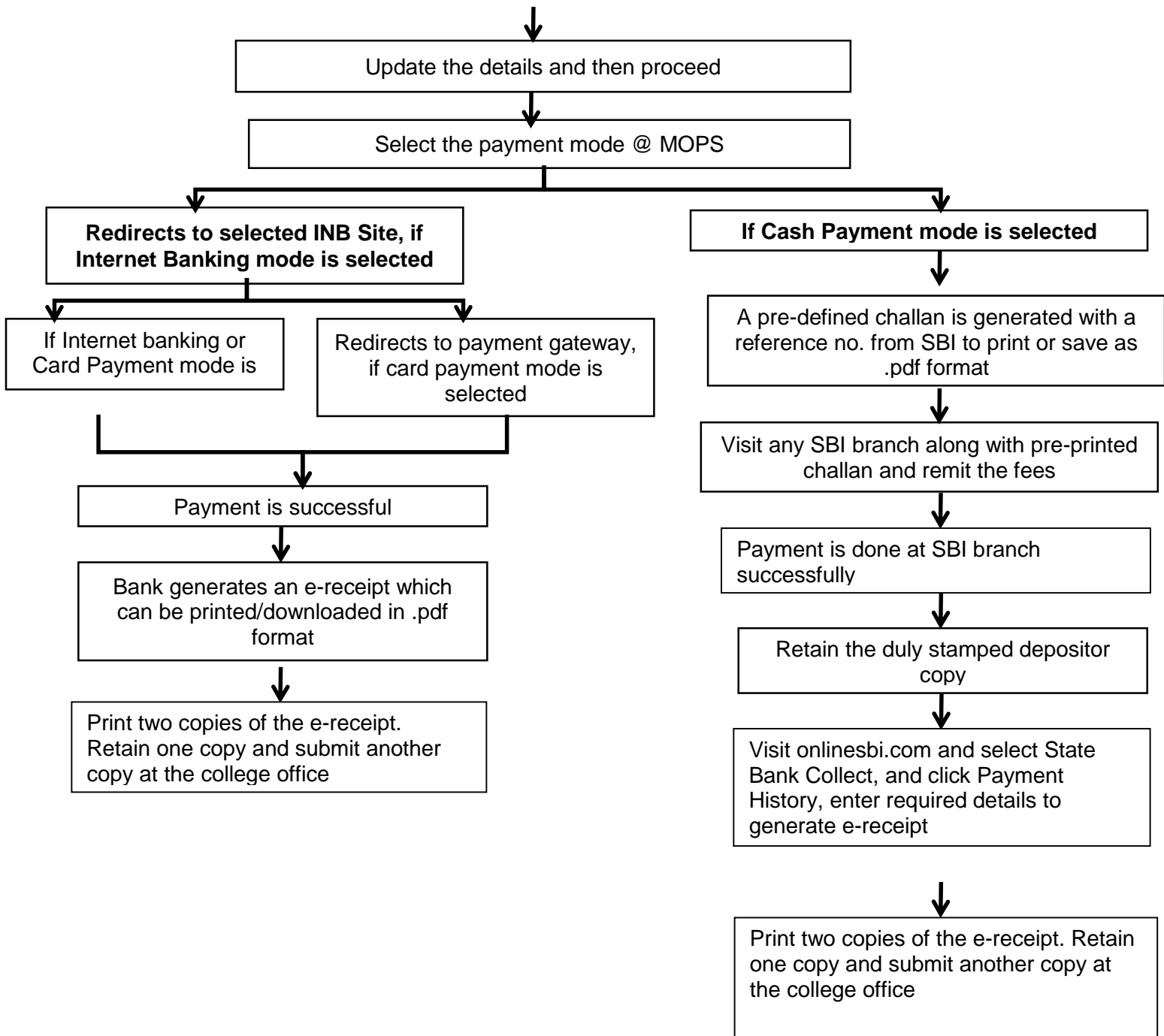
### **Using SBI Collect, fee can be paid at any SBI branch PAN India.**

To pay fee in SBI branch parent / guardian will be required to generate a deposit slip online, print it & then present it at the counter of any SBI branch to deposit the fee in cash. The fee payment through this mode is also subject to convenience charge as mentioned in SBI portal.

## **Online Fee Payment Process using SBI Collect**

### **Online Payment Mode Procedure – Fee remittance to “Jain College - J C Road”**





**Online Fee Payment Process using SBI Collect**

**Online Payment Mode Procedure – Fee remittance to “SBMJECT – JC”**

